

FEATURES



USED BY:

- SHIPYARDS
- STEEL PLANTS
- MILITARY
- MANUFACTURERS OF:
TRAILERS
ENGINES
ELECTRICAL APPLIANCES
CUSTOM VEHICLES
MACHINERY

IDEAL FOR:

- MANUAL PERSONALIZATION OF METAL PLATES IN ALL ENVIRONMENTS

NO POWER SUPPLY REQUIRED
TOTALLY PORTABLE



MANUAL SERIES

M10 HE



**EMBOSSING OR DEBOSSING
PORTABLE, ROBUST AND COMPACT FOR
DOG TAG AND METAL PLATE MARKING**

Embossing type set

Blocco 5 mm



Simplex 2



Blocco USA

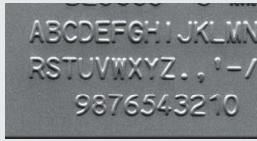


Debossing type set

Block USA



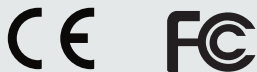
TECHNICAL FEATURES



Character selection ring



60 characters capacity drum



PLATE

plate dimensions

width: 0.47 - 3.74 in / 12- 95 mm
height: 0.47 - 2.95 in / 12 - 75 mm
thickness: 0.0157 - 0.0354 in / 0.4 - 0.9 mm

plate materials feed

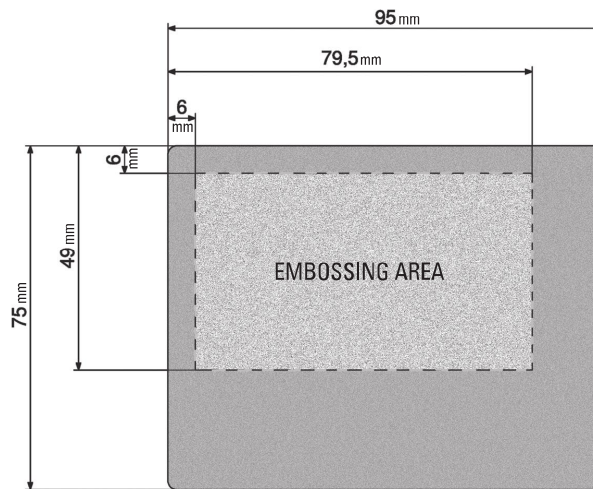
stainless steel, carbon steel, aluminum, copper, brass
manual

EMBOSSING

technology drum capacity type set

Embossing or debossing
60 slots
many characters configurations available:
Embossing: Simplex 2, OCRB1, Blocco USA, Blocco 5 mm - others available on request
Debossing: Elite Dog Tag

embossing area*



*Measurements are taken from the base and left side of the character.

HARDWARE

dimensions (WxDxH) 9.8 x 17.3 x 10.2 in / 250 x 440 x 260 mm
weight 28 lbs / 13 kg

Portable, yet robust and compact. The **M10 HE** is entirely manual and can be used anytime, anywhere.

No power supply required.

With its 60 characters capacity drum, the automatic spacing function and the whole plate free format, the **M10 HE** is designed to meet a wide range of requirements and is ideal for the personalization of low to medium tag volumes.